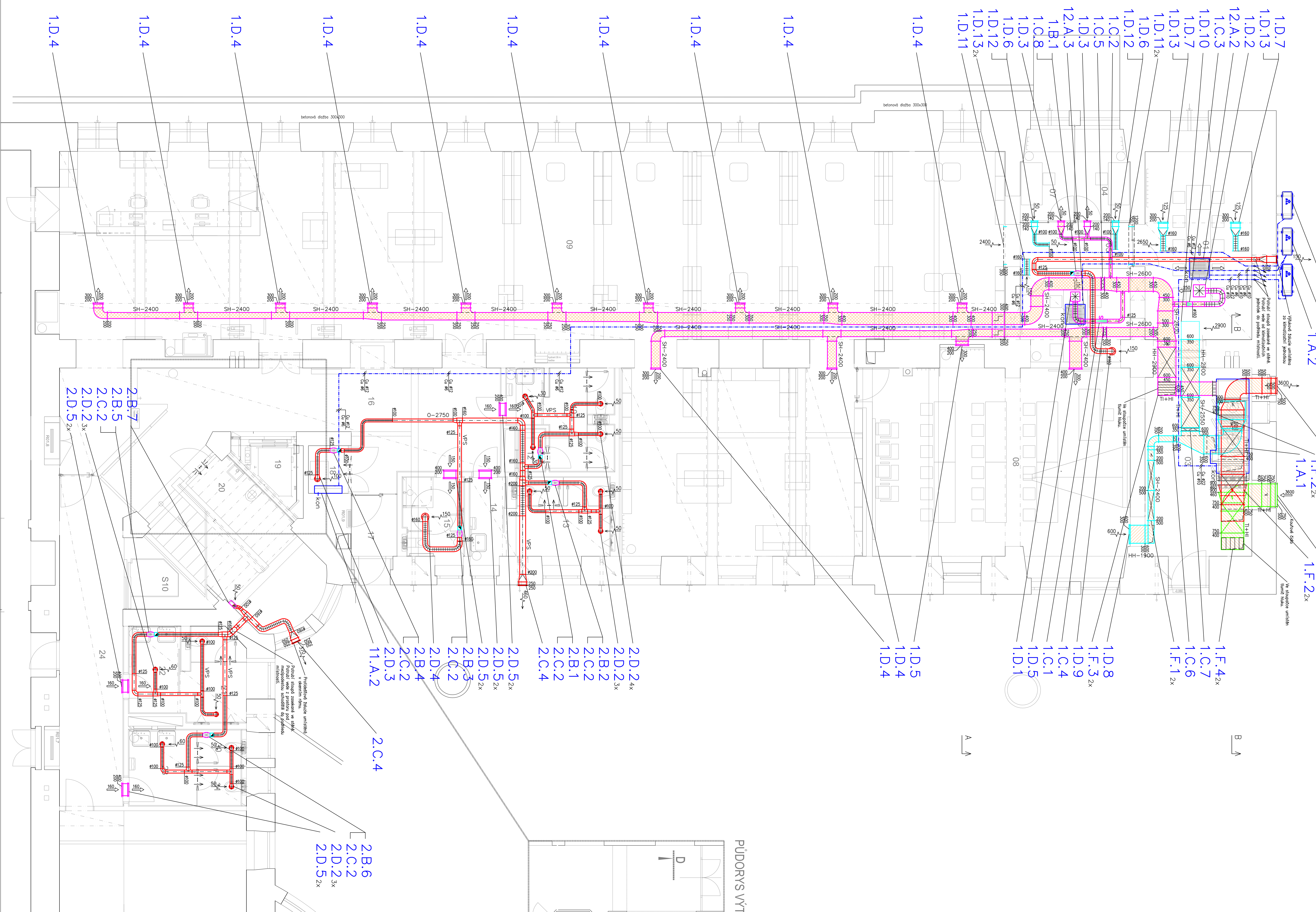
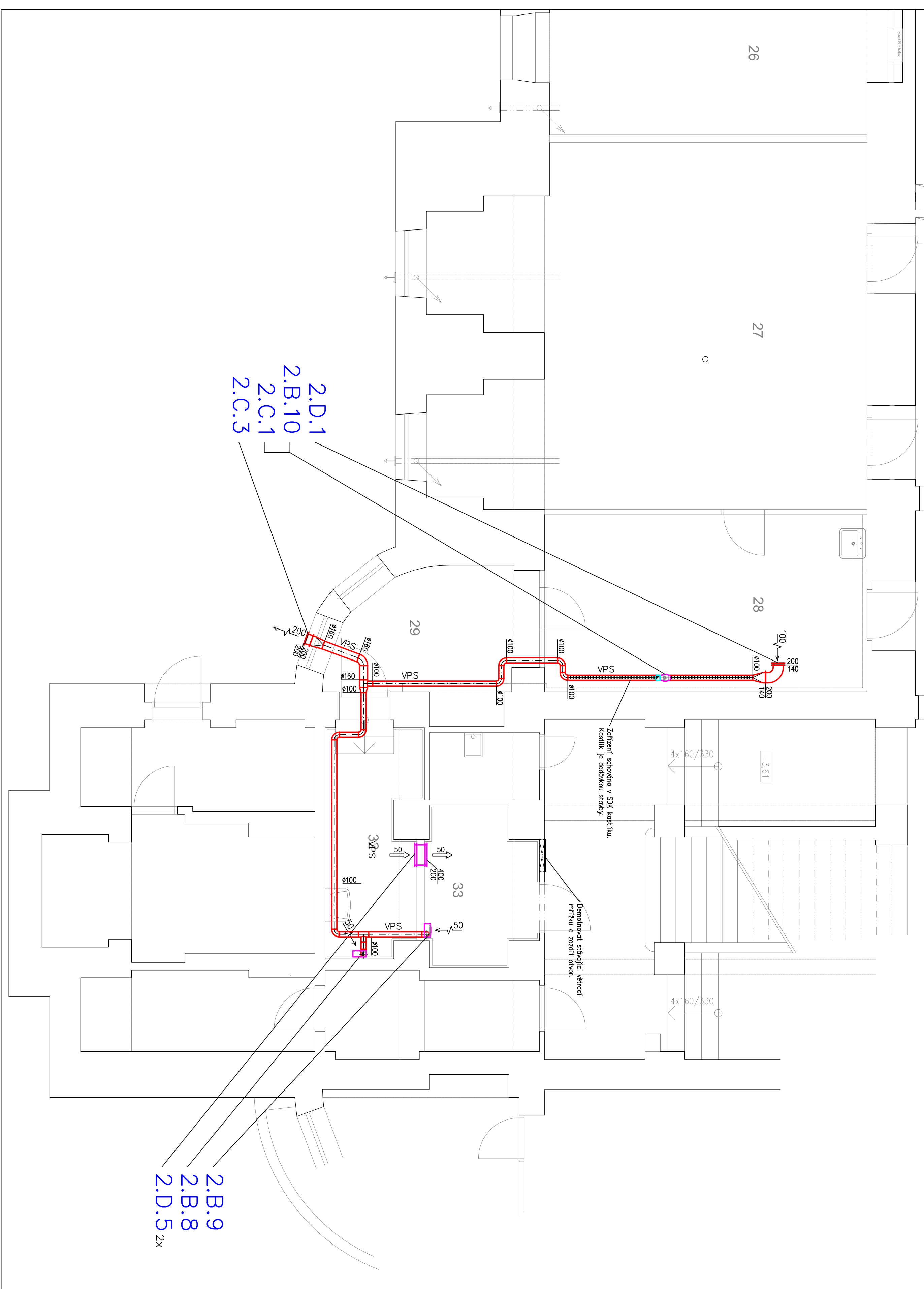


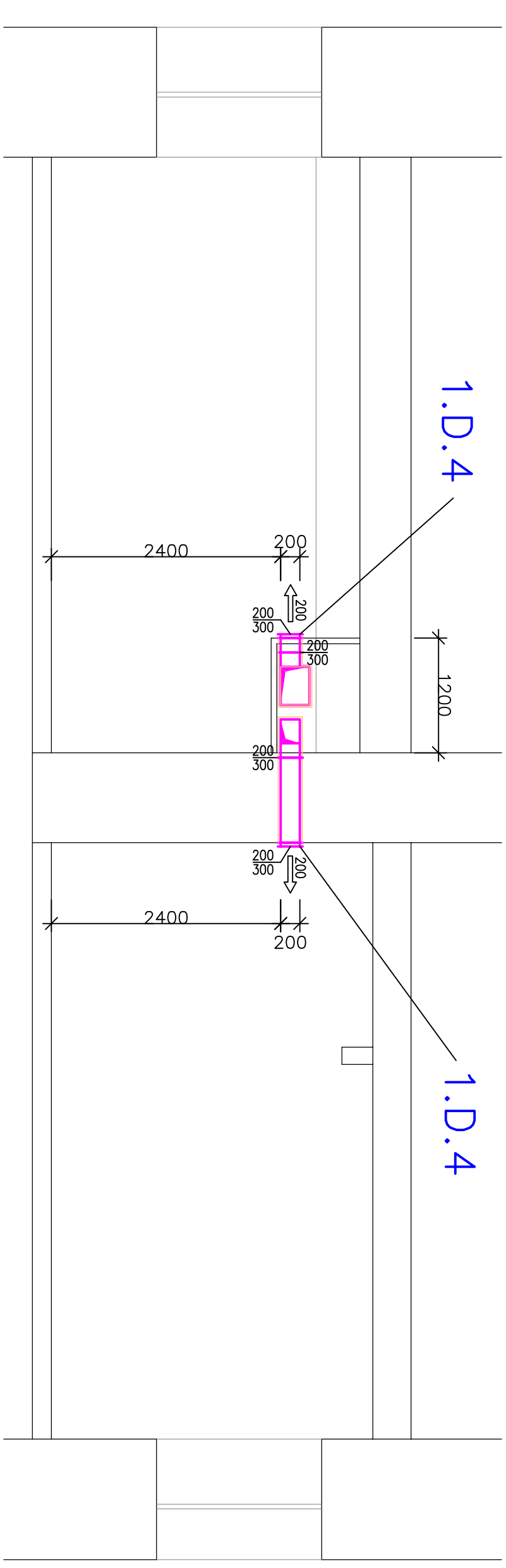
## Výřez A



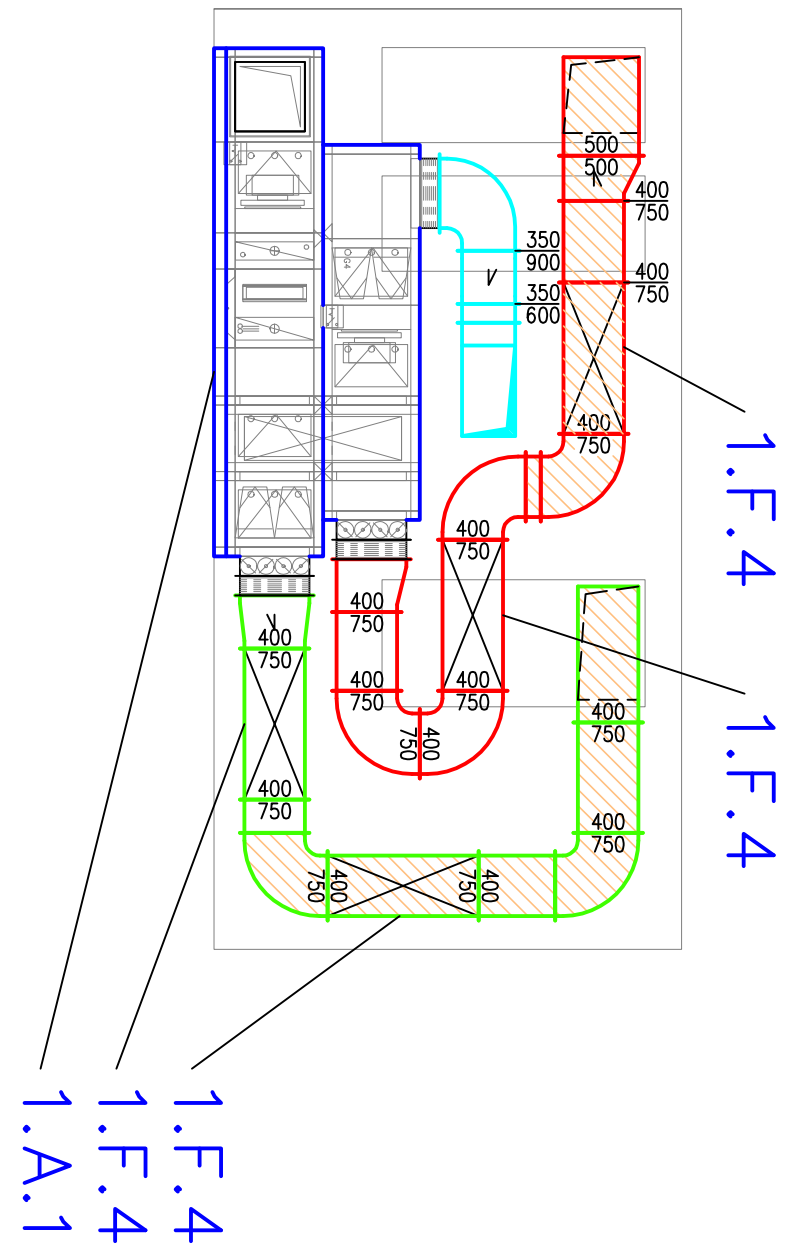
## Výřez B



## Řez A-A



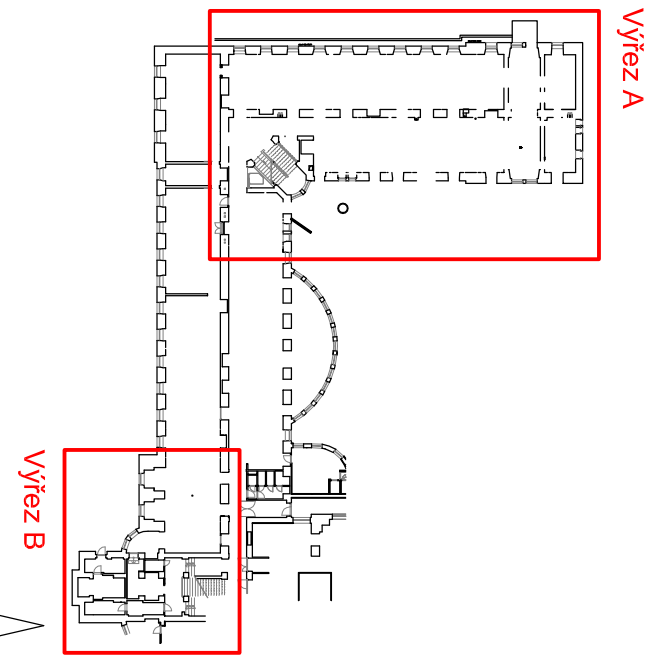
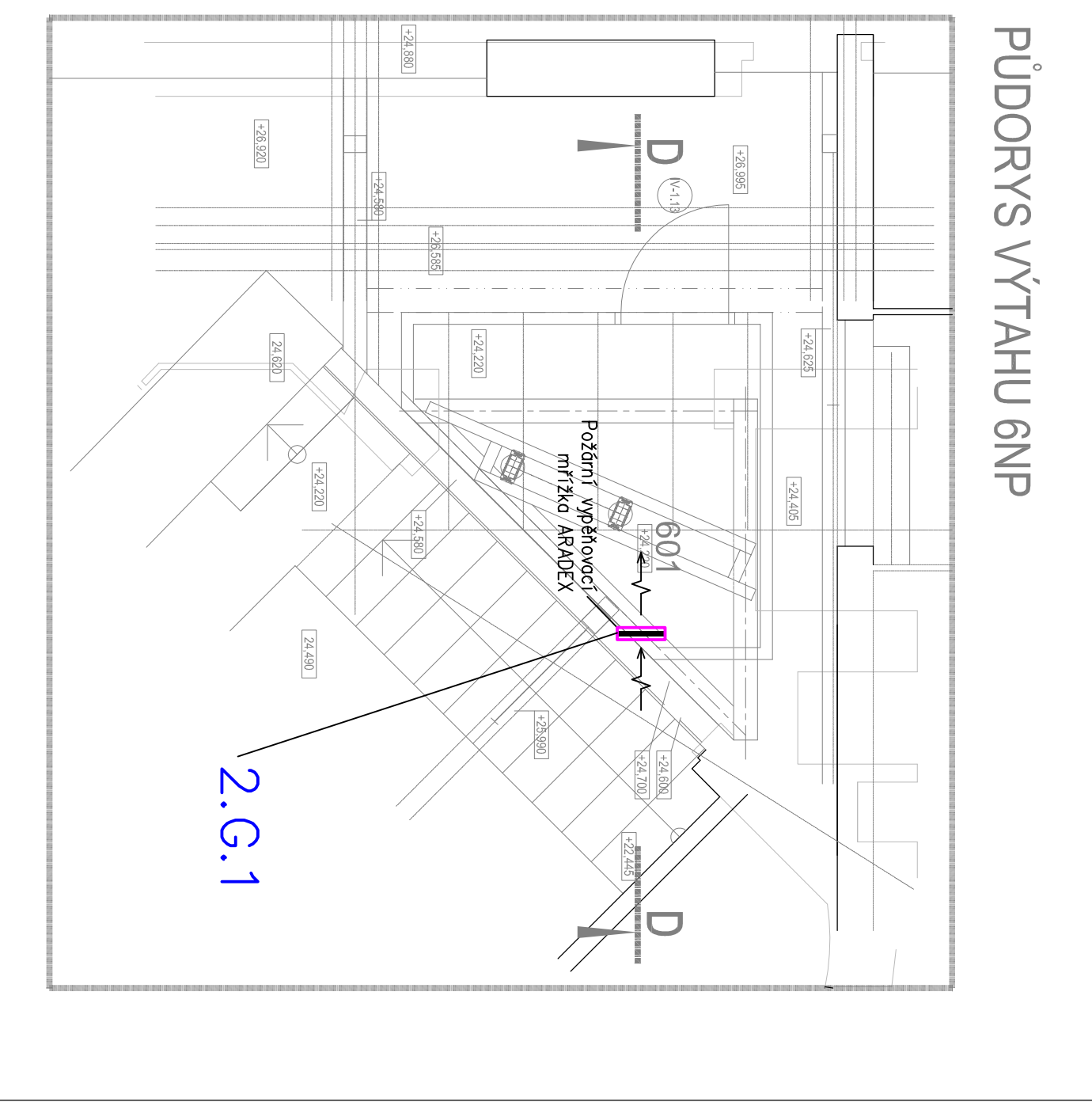
## Rez B-B



Socioeconomic and Environmental Data				Health and Demographic Data				Healthcare Access and Outcomes			
Region	Population	Income Level	Urbanization	Age Group	Gender	Ethnicity	Religion	Facility Type	Distance (km)	Waiting Time (hrs)	Success Rate (%)
North America	321	High	85%	18-24	Male	White	Christian	Specialty Clinic	15	2-3	92%
	322	High	85%	25-34	Female	White	Christian	General Practice	10	1-2	88%
	323	High	85%	35-44	Male	White	Christian	Urgent Care	20	3-4	85%
	324	High	85%	45-54	Female	White	Christian	Primary Care	5	0.5-1	95%
	325	High	85%	55-64	Male	White	Christian	Emergency Room	30	4-5	80%
South America	326	Medium	70%	18-24	Male	Latino	Catholic	Specialty Clinic	25	3-4	85%
	327	Medium	70%	25-34	Female	Latino	Catholic	General Practice	15	2-3	82%
	328	Medium	70%	35-44	Male	Latino	Catholic	Urgent Care	20	3-4	80%
	329	Medium	70%	45-54	Female	Latino	Catholic	Primary Care	10	1-2	90%
	330	Medium	70%	55-64	Male	Latino	Catholic	Emergency Room	35	4-5	78%
Europe	331	High	90%	18-24	Male	White	Christian	Specialty Clinic	10	1-2	95%
	332	High	90%	25-34	Female	White	Christian	General Practice	5	0.5-1	98%
	333	High	90%	35-44	Male	White	Christian	Urgent Care	15	2-3	90%
	334	High	90%	45-54	Female	White	Christian	Primary Care	3	0.2-0.5	99%
	335	High	90%	55-64	Male	White	Christian	Emergency Room	25	3-4	85%
Africa	336	Low	60%	18-24	Male	Black	Christian	Specialty Clinic	40	5-6	75%
	337	Low	60%	25-34	Female	Black	Christian	General Practice	20	3-4	70%
	338	Low	60%	35-44	Male	Black	Christian	Urgent Care	30	4-5	68%
	339	Low	60%	45-54	Female	Black	Christian	Primary Care	10	1-2	80%
	340	Low	60%	55-64	Male	Black	Christian	Emergency Room	45	6-7	65%
Asia	341	Medium	75%	18-24	Male	Asian	Buddhist	Specialty Clinic	15	2-3	88%
	342	Medium	75%	25-34	Female	Asian	Buddhist	General Practice	10	1-2	85%
	343	Medium	75%	35-44	Male	Asian	Buddhist	Urgent Care	20	3-4	82%
	344	Medium	75%	45-54	Female	Asian	Buddhist	Primary Care	5	0.5-1	90%
	345	Medium	75%	55-64	Male	Asian	Buddhist	Emergency Room	30	4-5	78%
Oceania	346	High	80%	18-24	Male	White	Christian	Specialty Clinic	10	1-2	90%
	347	High	80%	25-34	Female	White	Christian	General Practice	5	0.5-1	88%
	348	High	80%	35-44	Male	White	Christian	Urgent Care	15	2-3	85%
	349	High	80%	45-54	Female	White	Christian	Primary Care	3	0.2-0.5	92%
	350	High	80%	55-64	Male	White	Christian	Emergency Room	25	3-4	80%

## POZNÁMKY

- [illegible]

[illegible][illegible]